

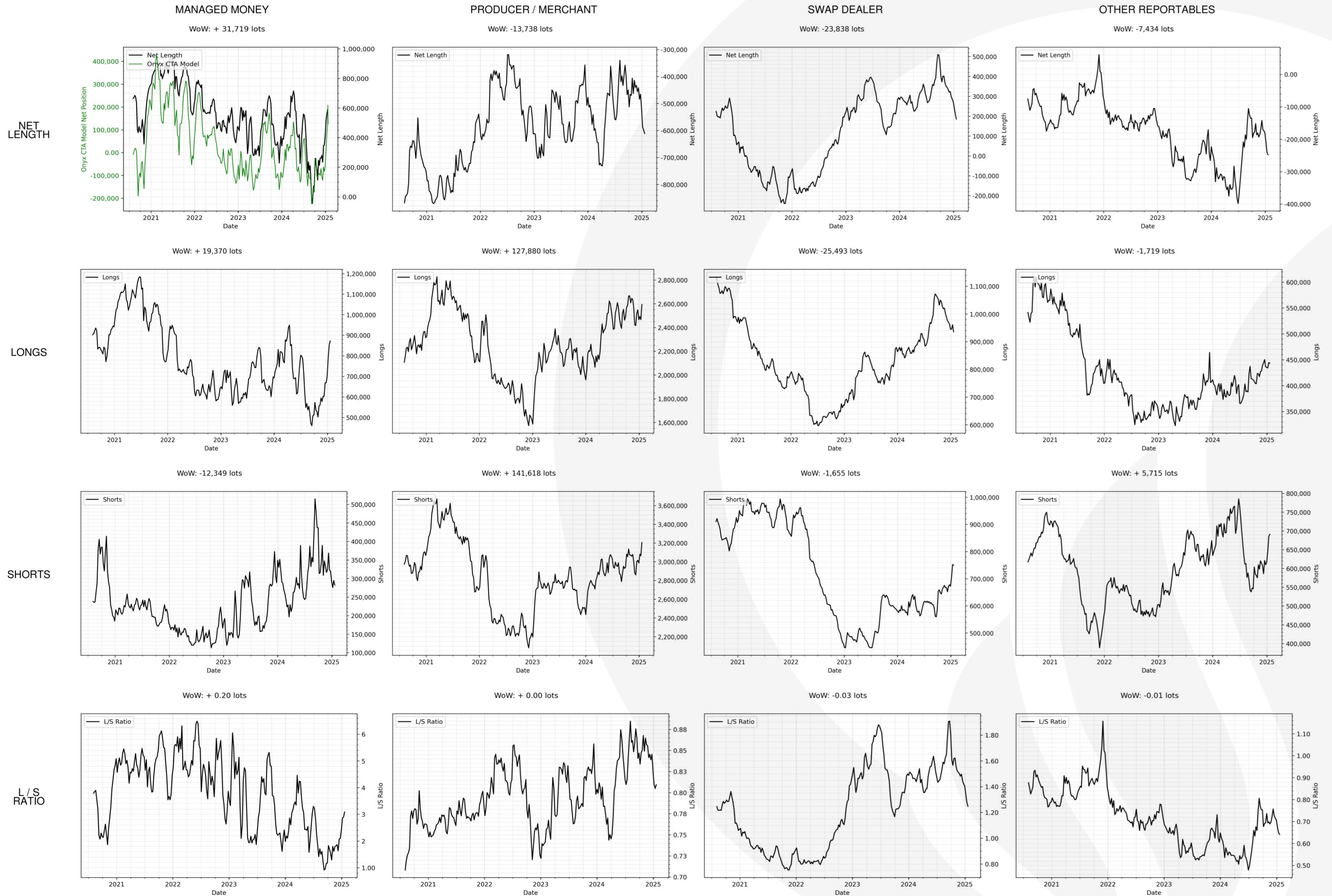


# CFTC - SUMMARY POSITIONING CHARTS

FOR MORE INSIGHT, SEE OUR WEEKLY CFTC ANALYSIS REPORT



TOTAL (BRT + WTI + GO + HO + RBOB)

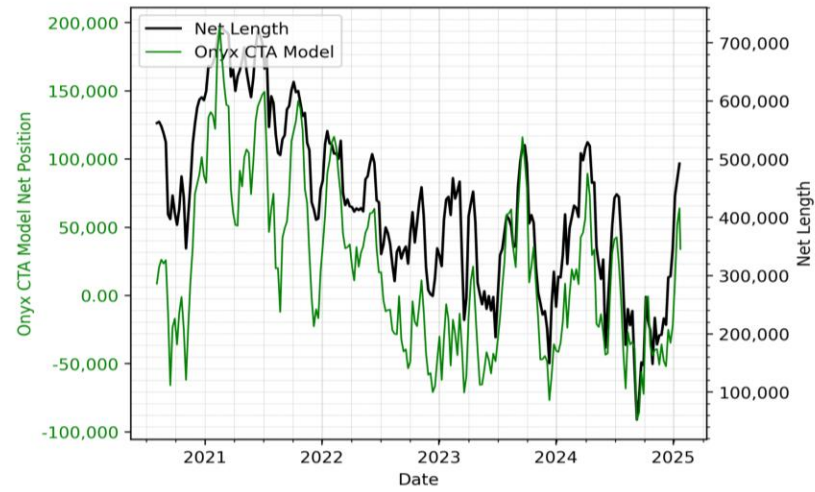




CRUDE (BRT + WTI)

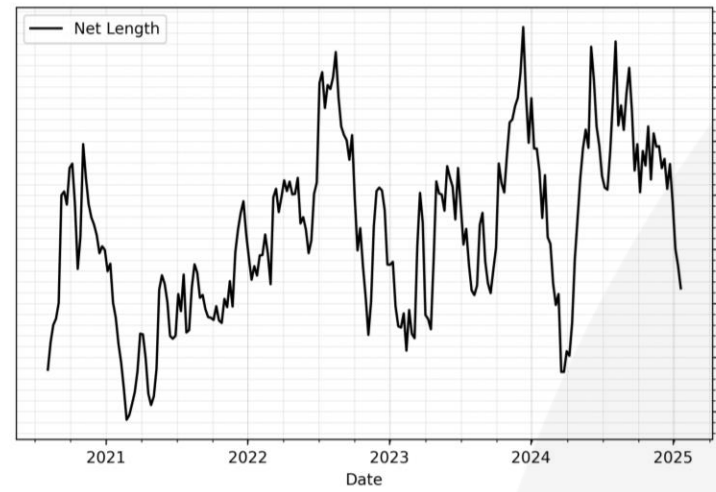
MANAGED MONEY

WoW: + 27,569 lots



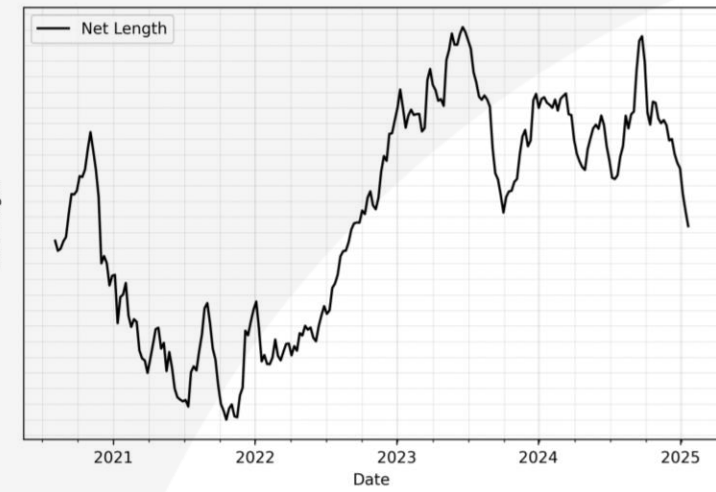
PRODUCER / MERCHANT

WoW: -20,821 lots



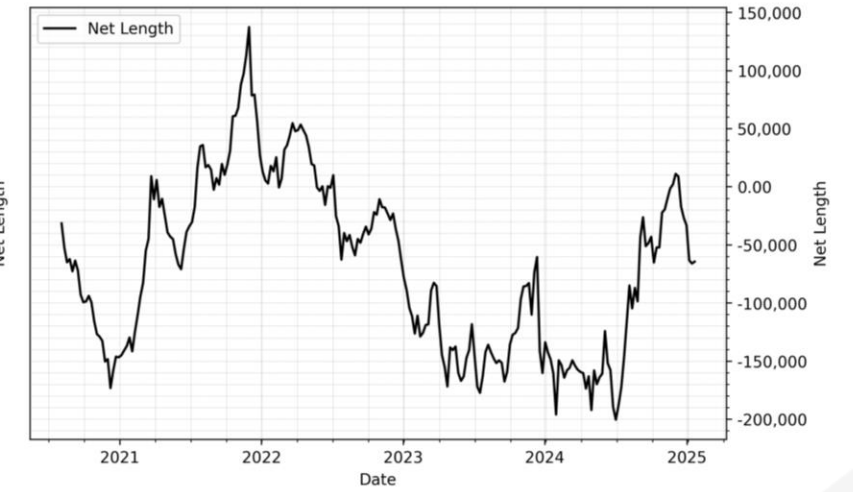
SWAP DEALER

WoW: -19,797 lots



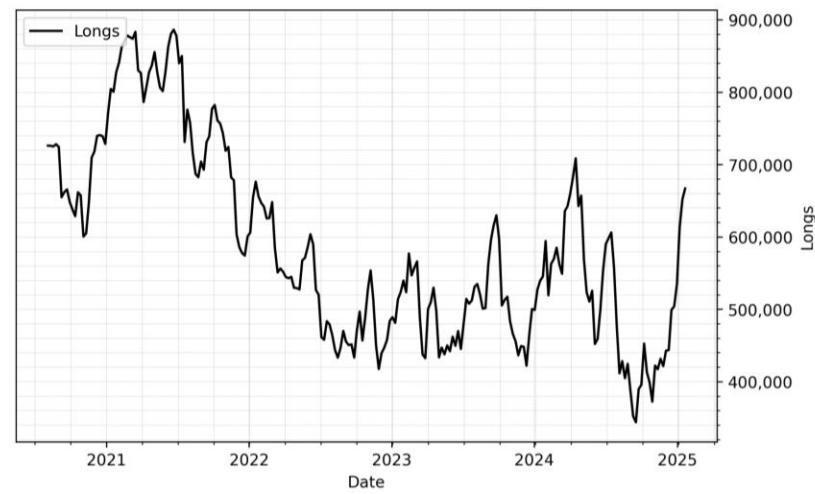
OTHER REPORTABLES

WoW: + 1,620 lots

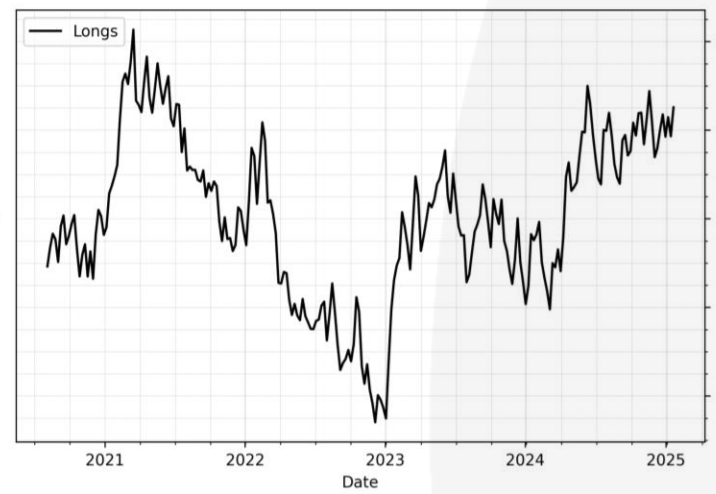


NET LENGTH

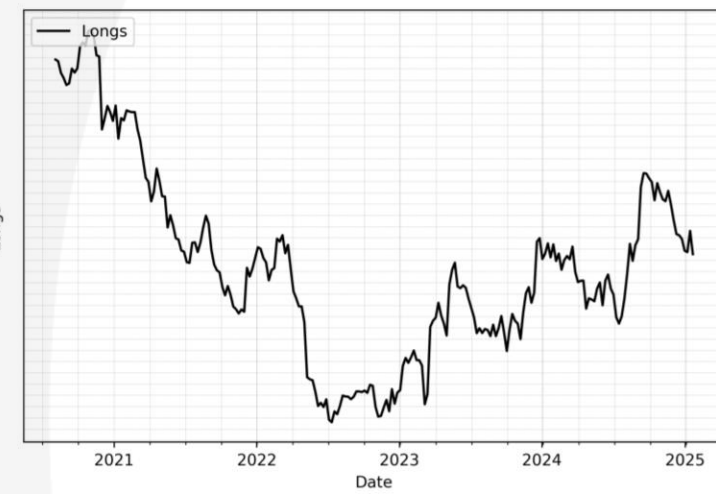
WoW: + 14,964 lots



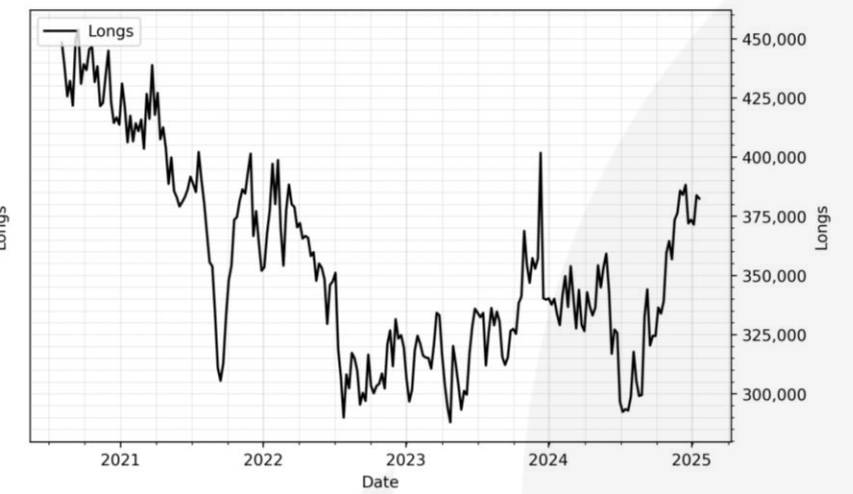
WoW: + 65,512 lots



WoW: -20,719 lots

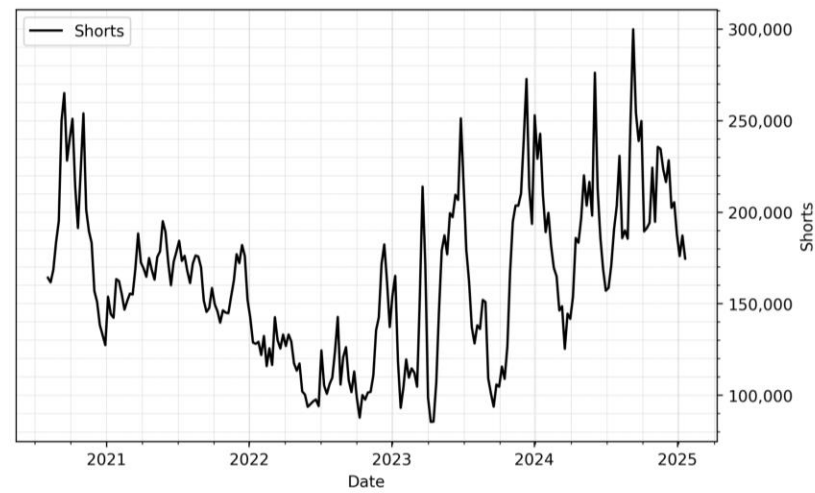


WoW: -1,379 lots

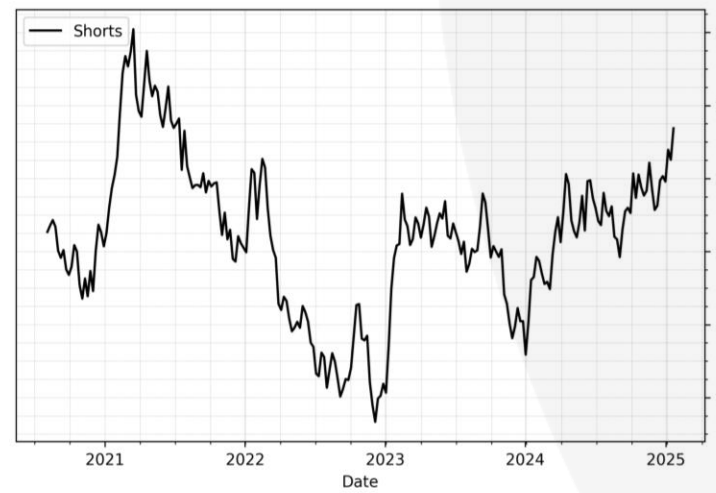


LONGS

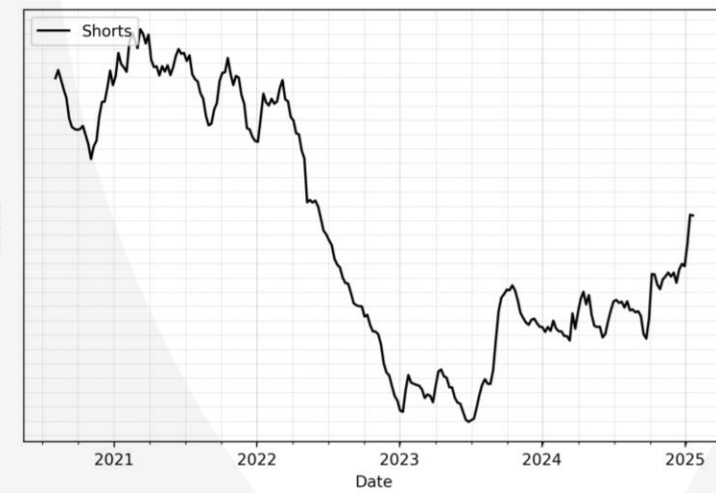
WoW: -12,605 lots



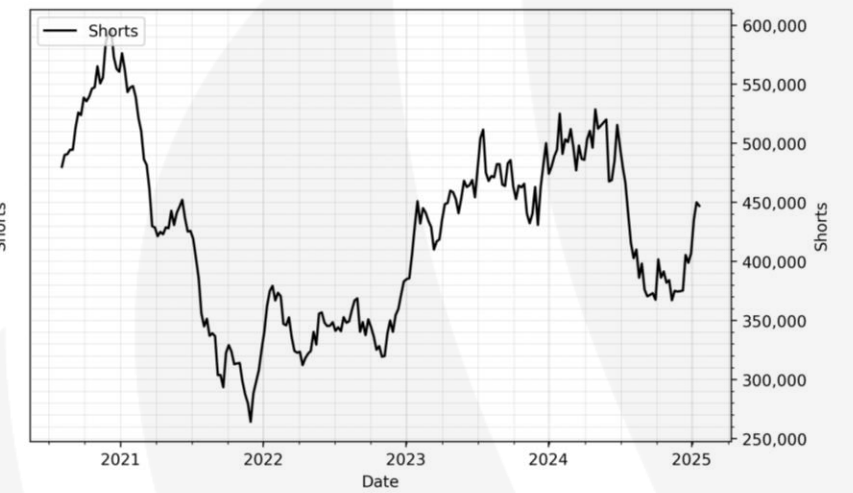
WoW: + 86,333 lots



WoW: -922 lots

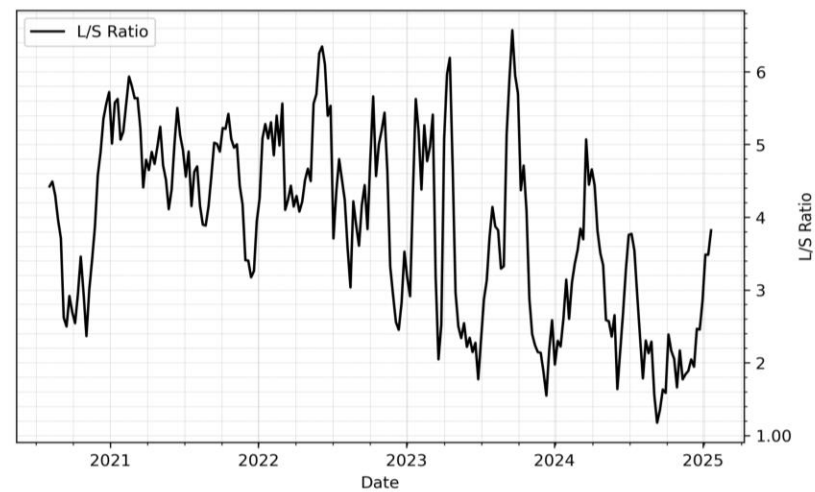


WoW: -2,999 lots

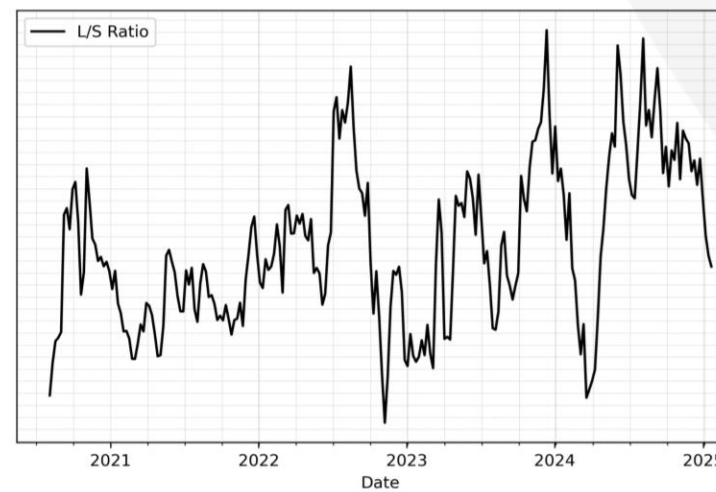


SHORTS

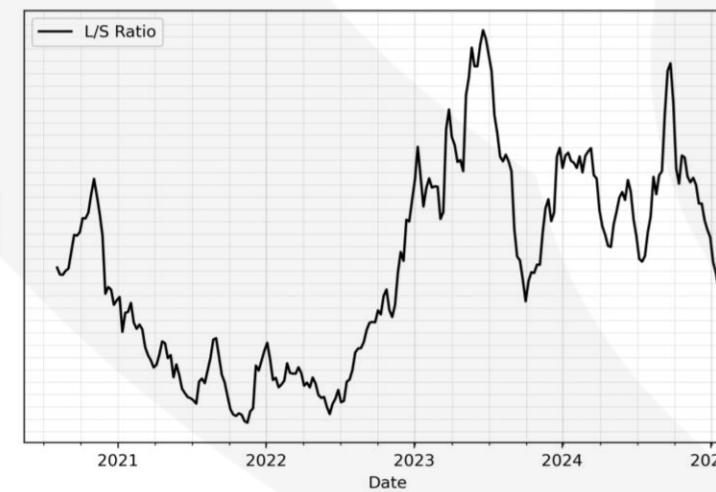
WoW: + 0.34 lots



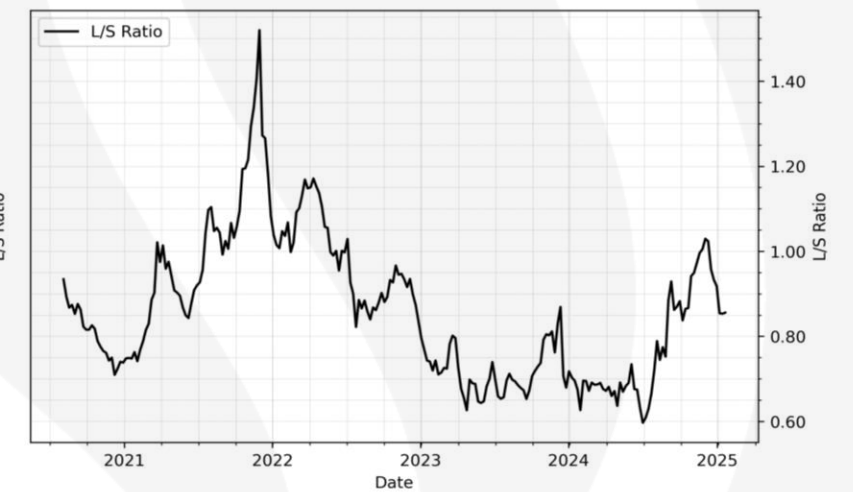
WoW: -0.00 lots



WoW: -0.03 lots



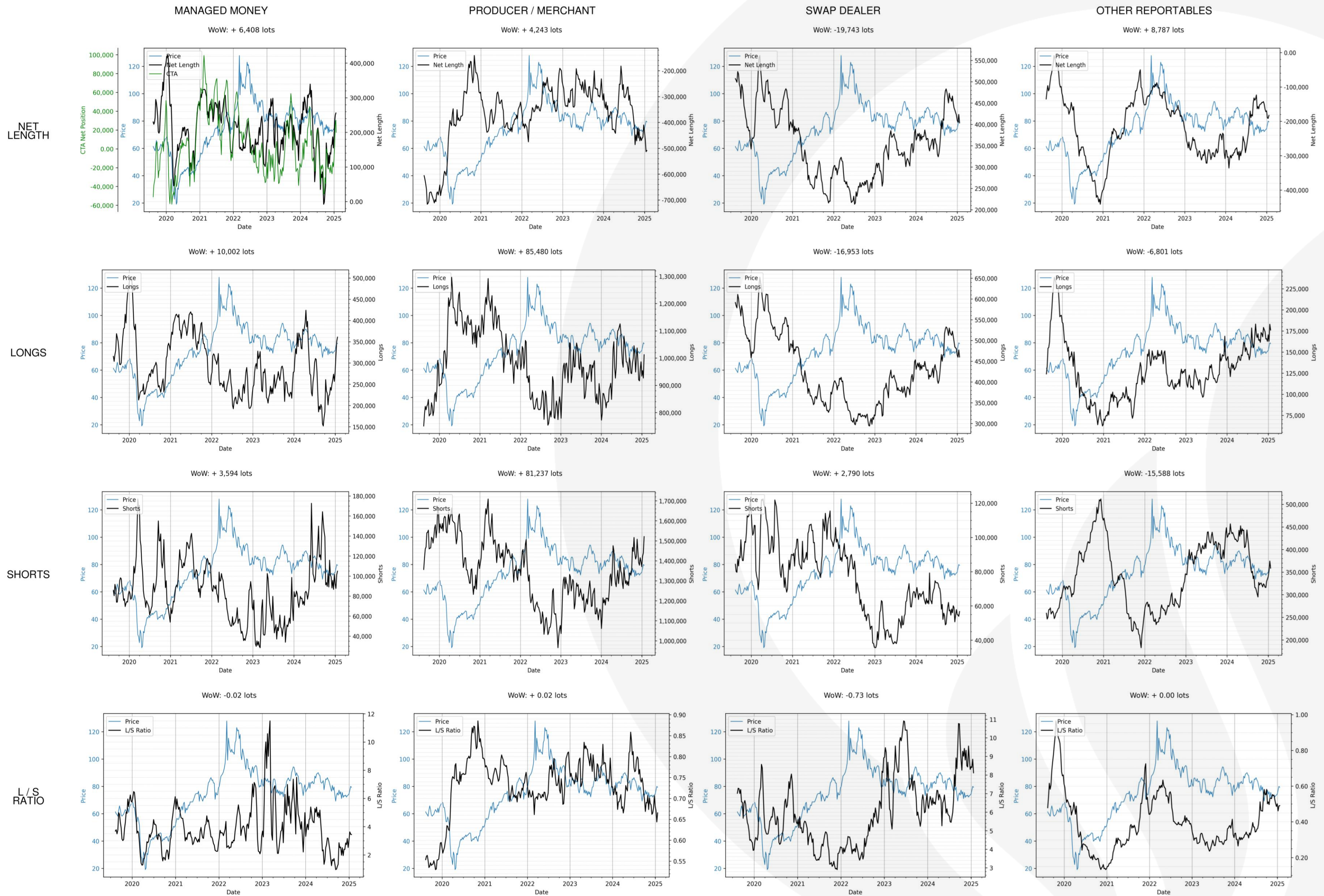
WoW: + 0.00 lots



L/S RATIO

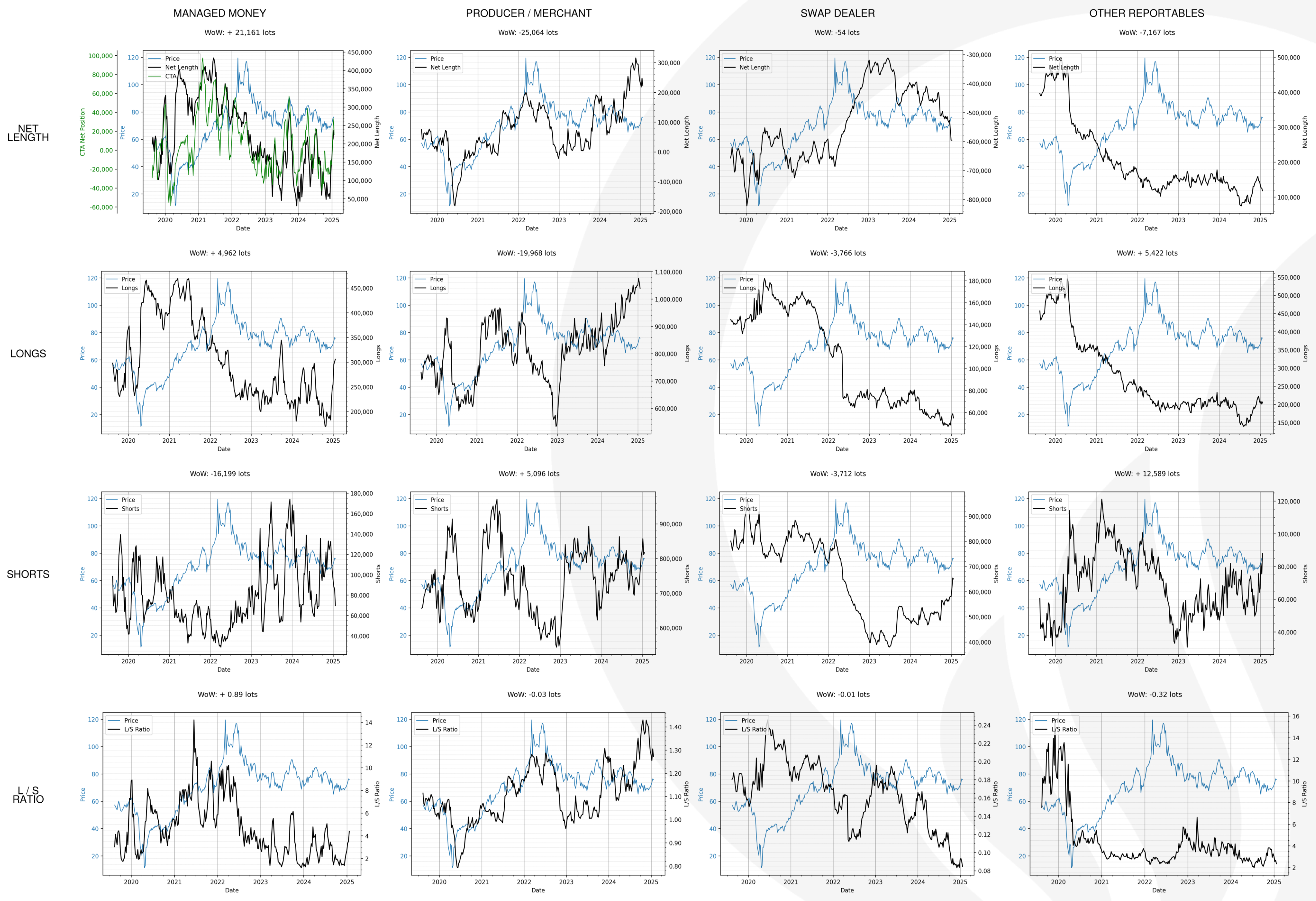


BRENT





WTI

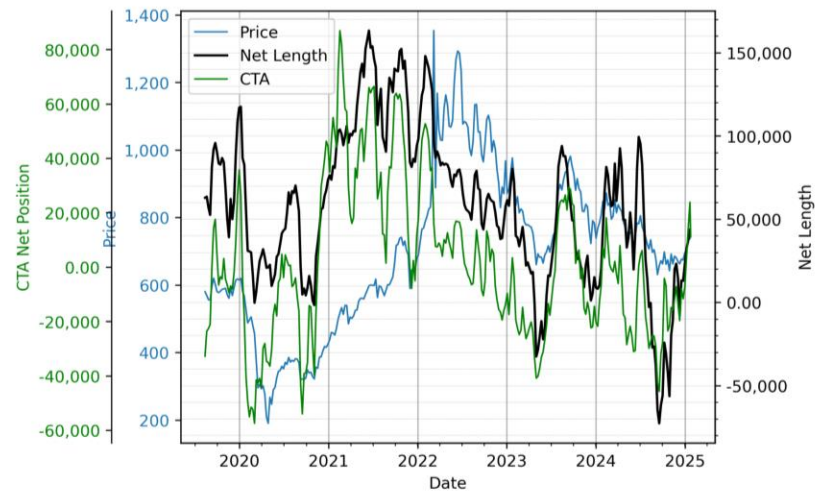




GASOIL

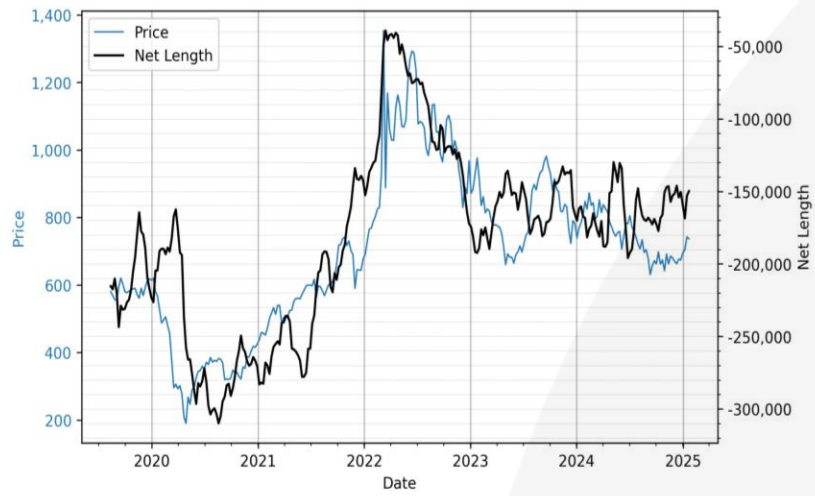
MANAGED MONEY

WoW: + 6,425 lots



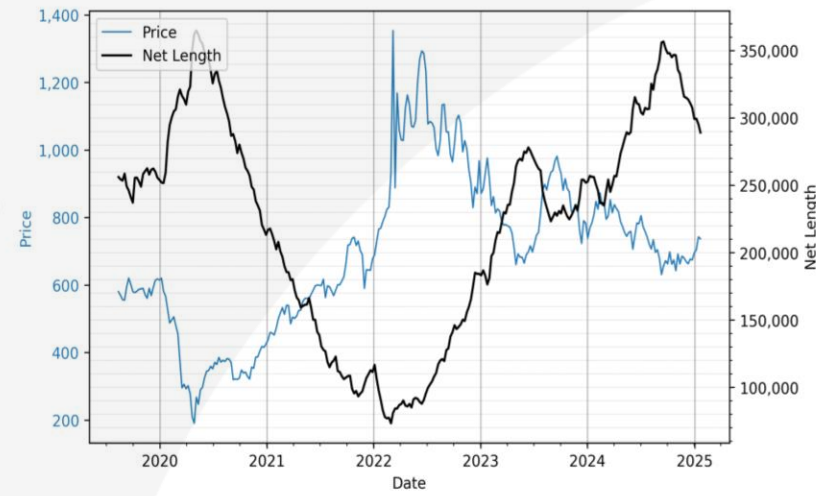
PRODUCER / MERCHANT

WoW: + 3,201 lots



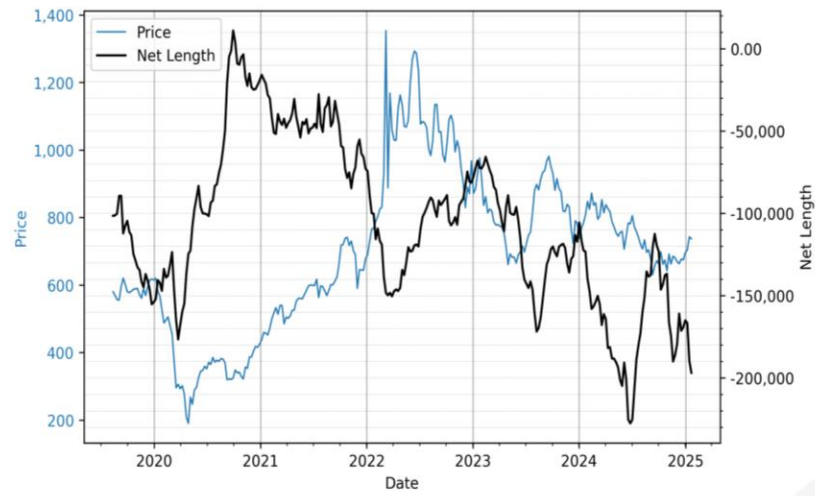
SWAP DEALER

WoW: -6,284 lots



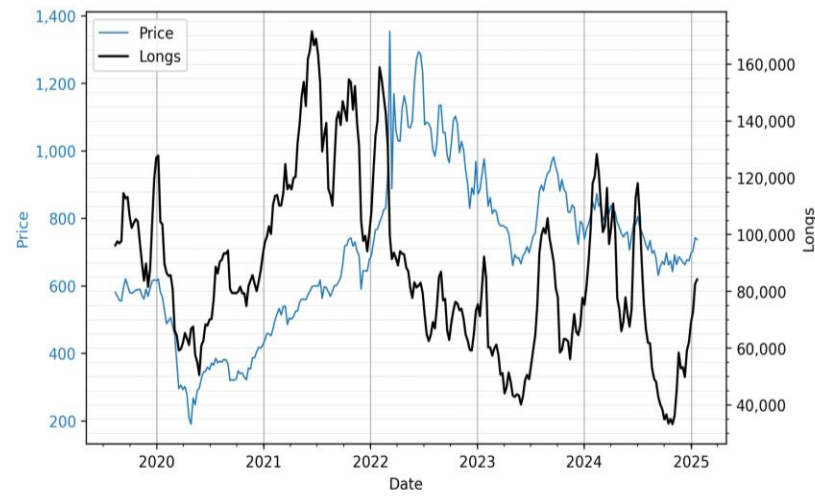
OTHER REPORTABLES

WoW: -7,218 lots

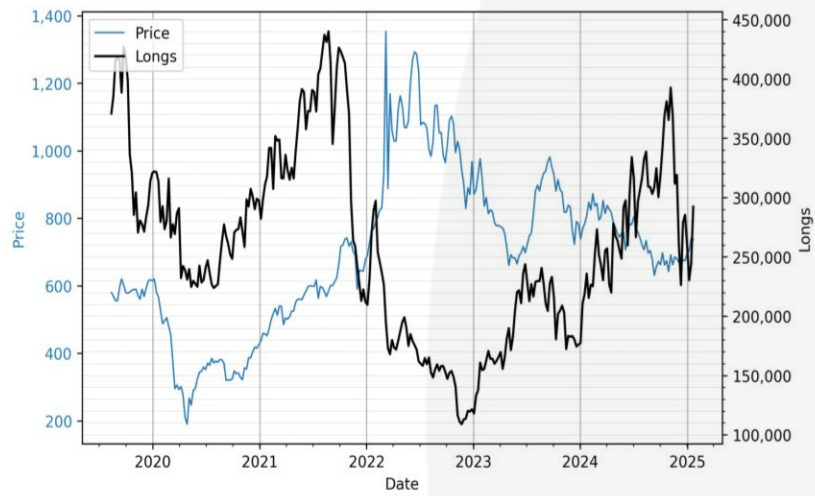


NET LENGTH

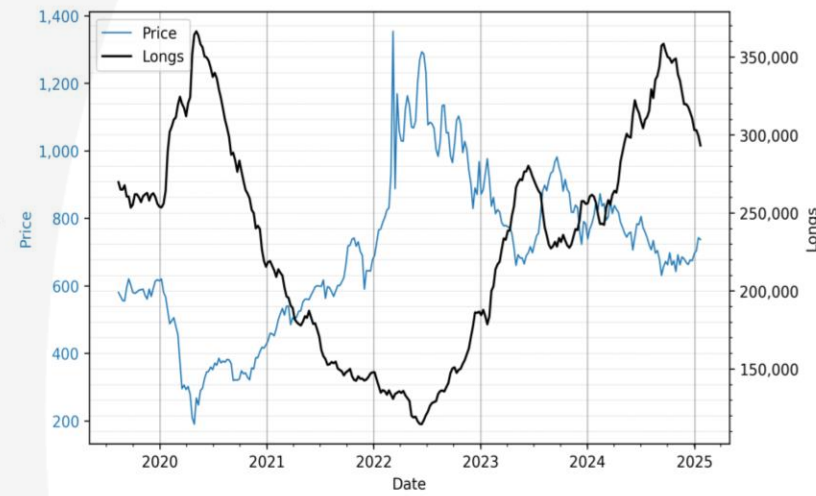
WoW: + 1,526 lots



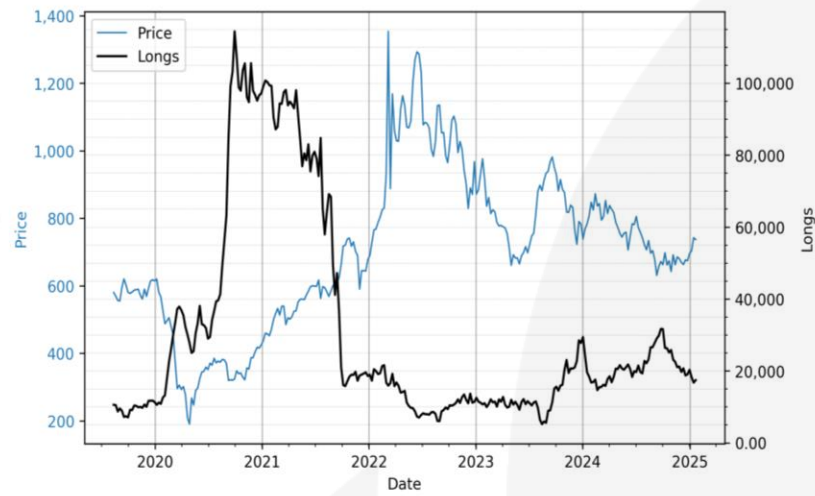
WoW: + 48,014 lots



WoW: -6,167 lots

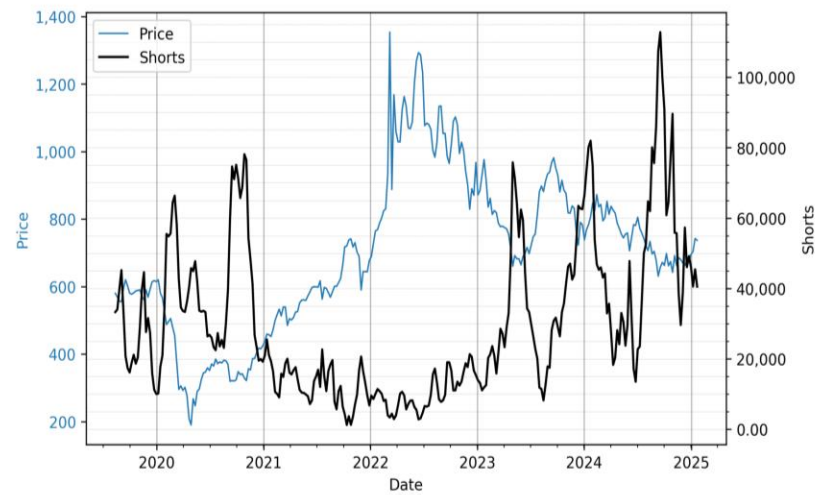


WoW: + 688 lots

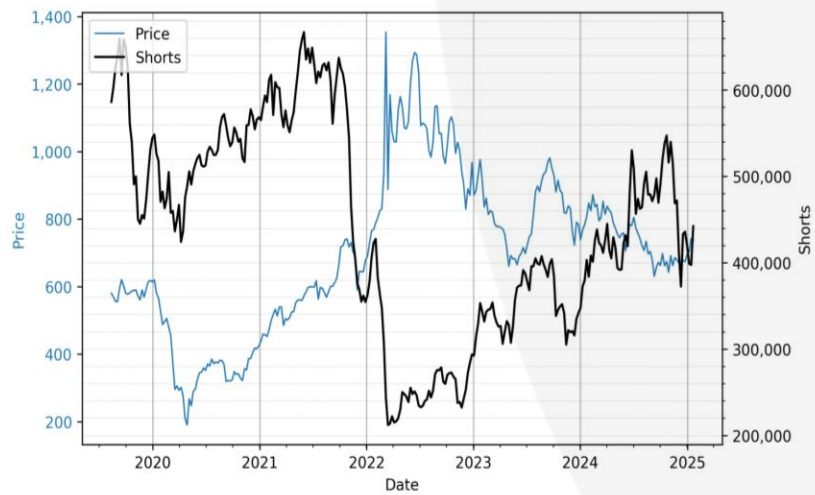


LONGS

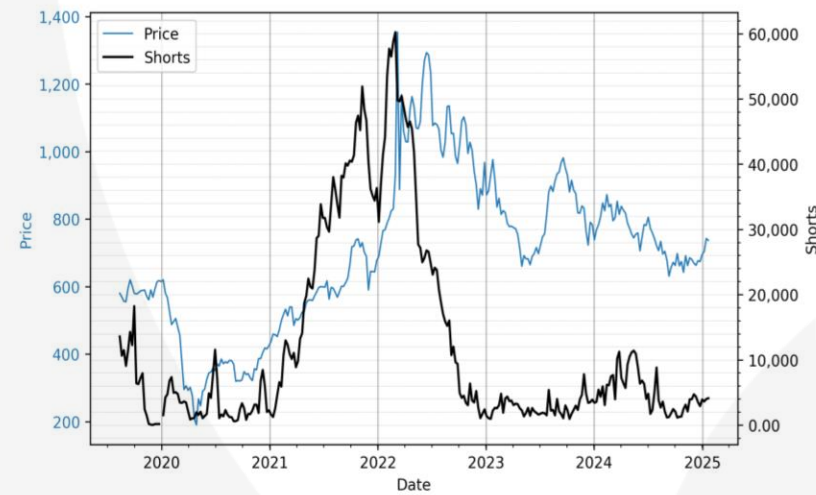
WoW: -4,899 lots



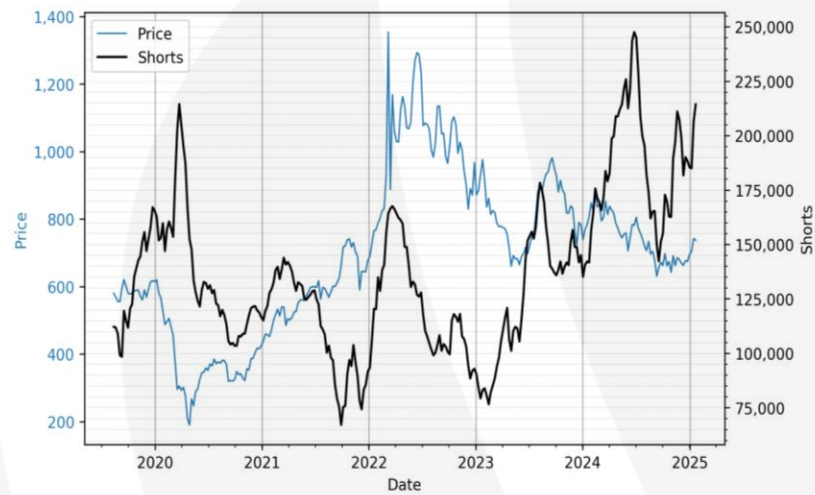
WoW: + 44,813 lots



WoW: + 117 lots

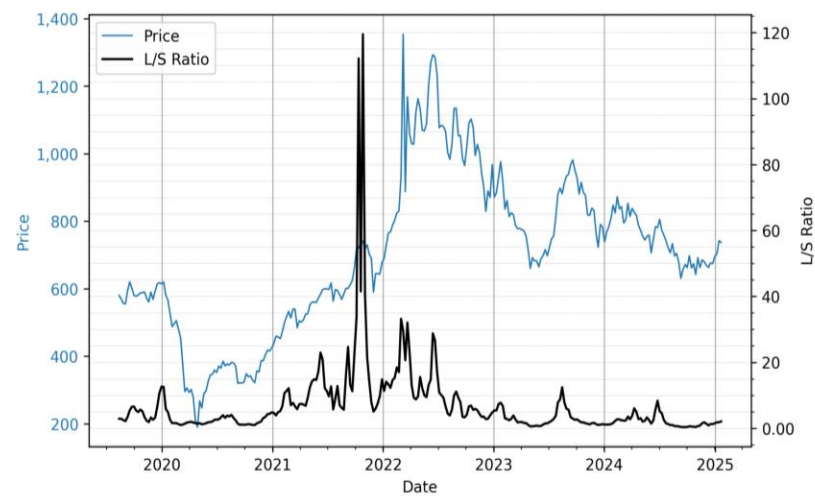


WoW: + 7,906 lots

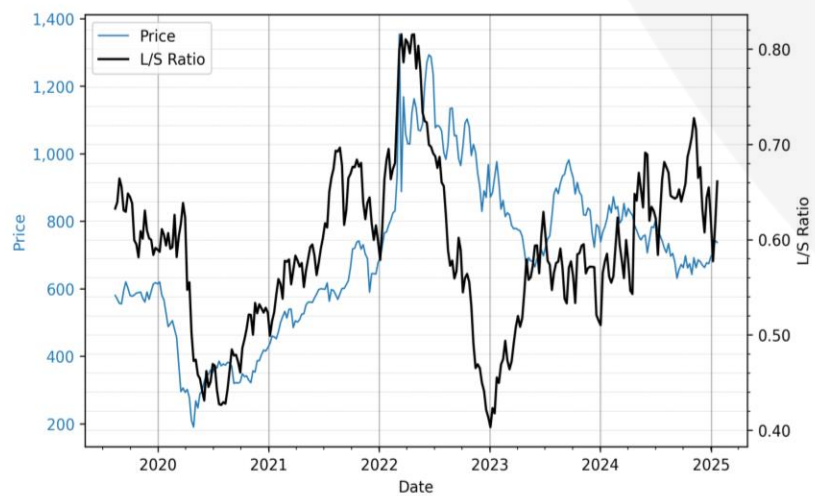


SHORTS

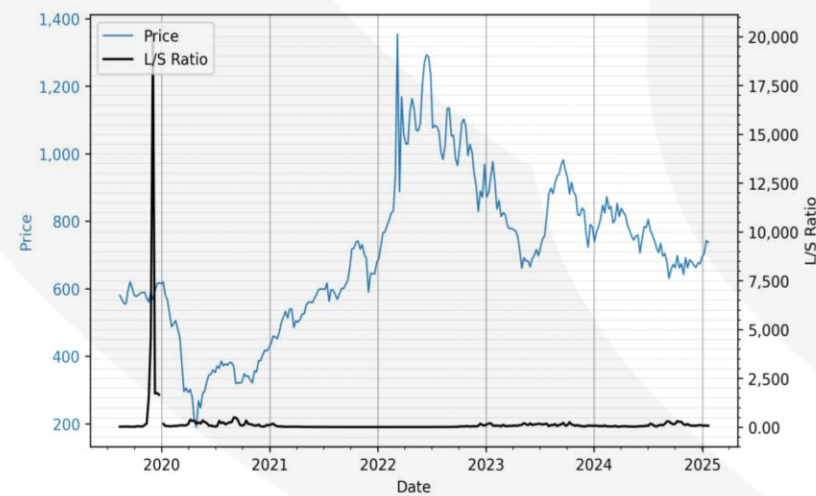
WoW: + 0.26 lots



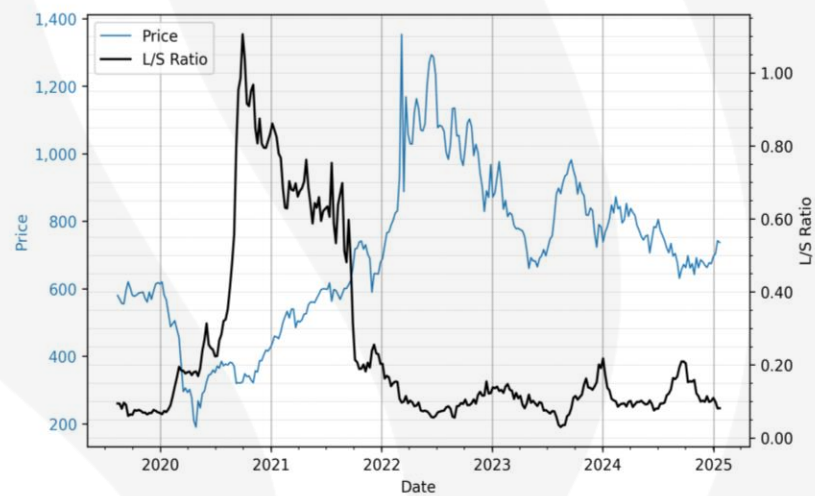
WoW: + 0.05 lots



WoW: -4 lots



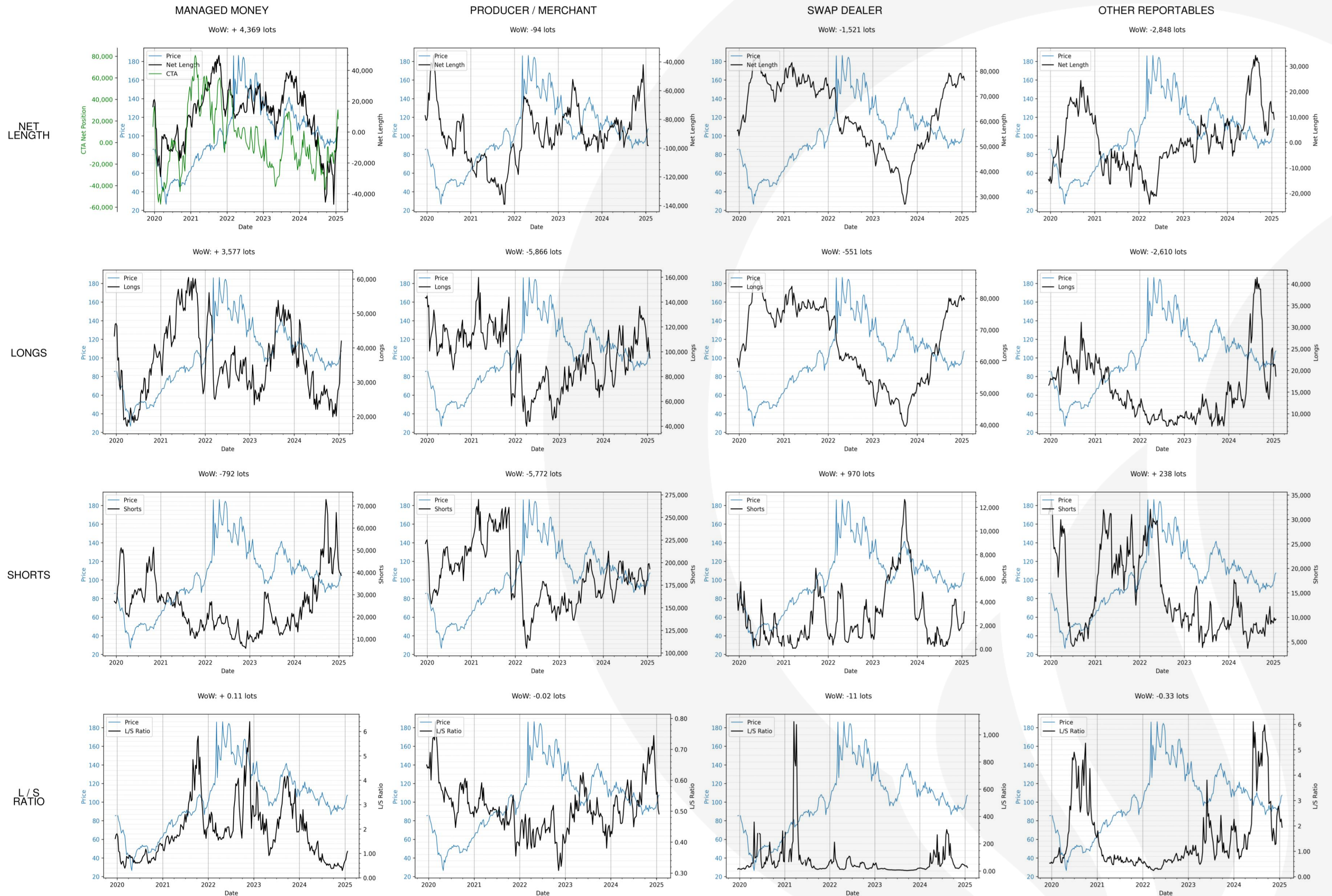
WoW: + 0.00 lots



L/S RATIO



## HEATING OIL

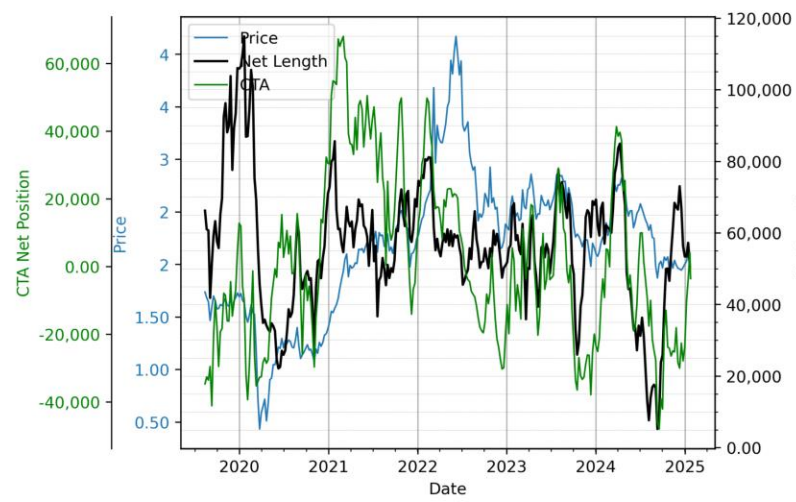




RBOB

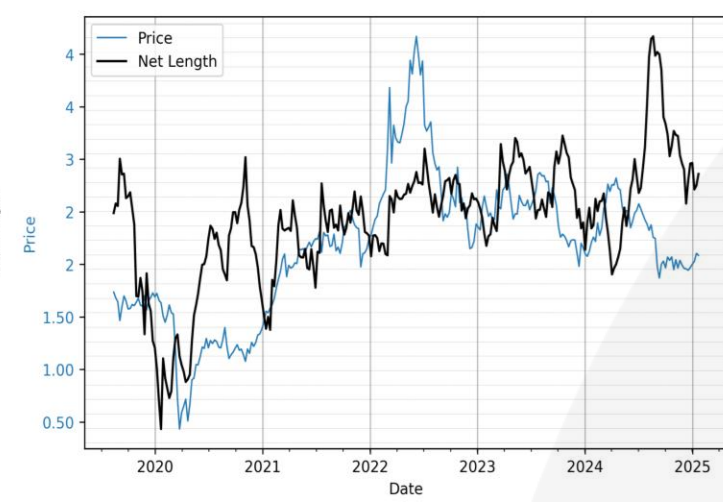
MANAGED MONEY

WoW: -6,644 lots



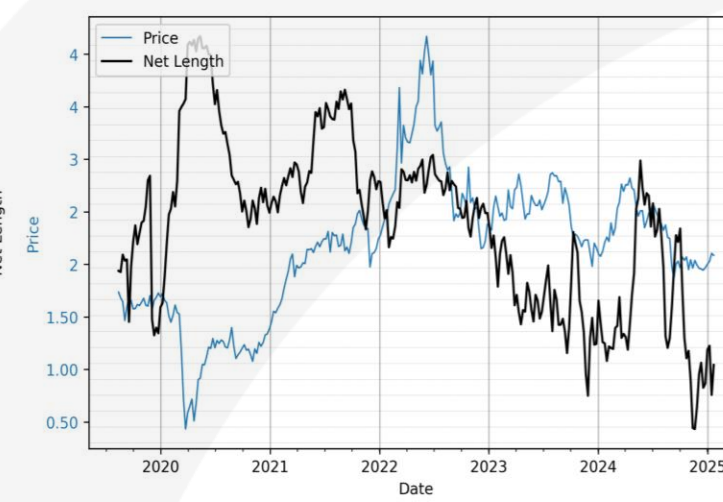
PRODUCER / MERCHANT

WoW: + 3,976 lots



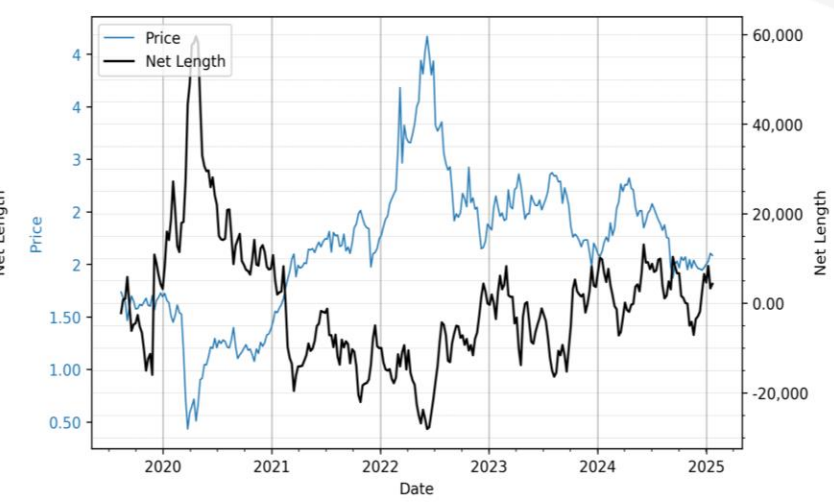
SWAP DEALER

WoW: + 3,764 lots



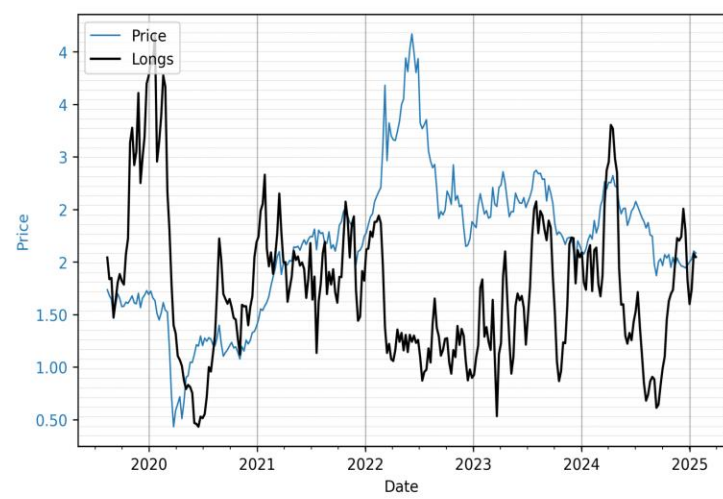
OTHER REPORTABLES

WoW: + 1,012 lots

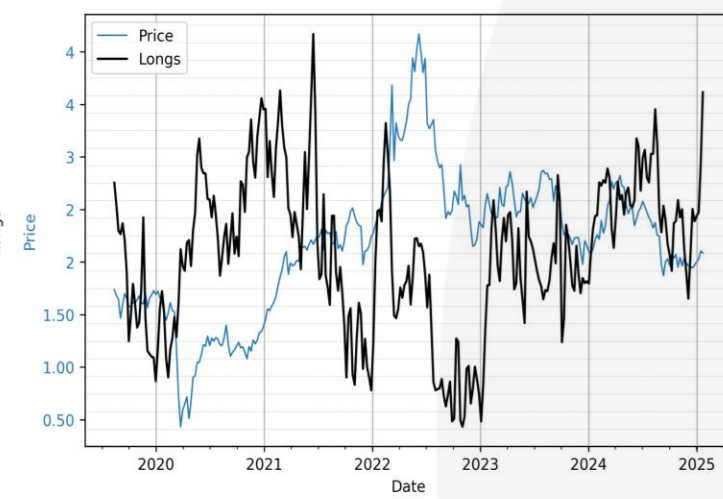


NET LENGTH

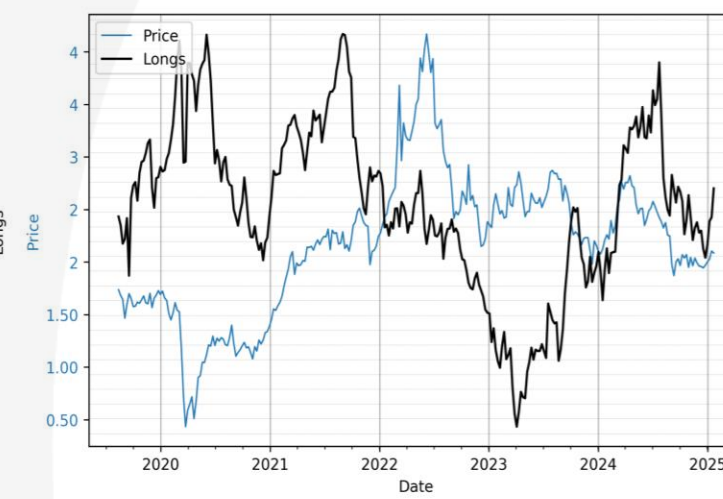
WoW: -697 lots



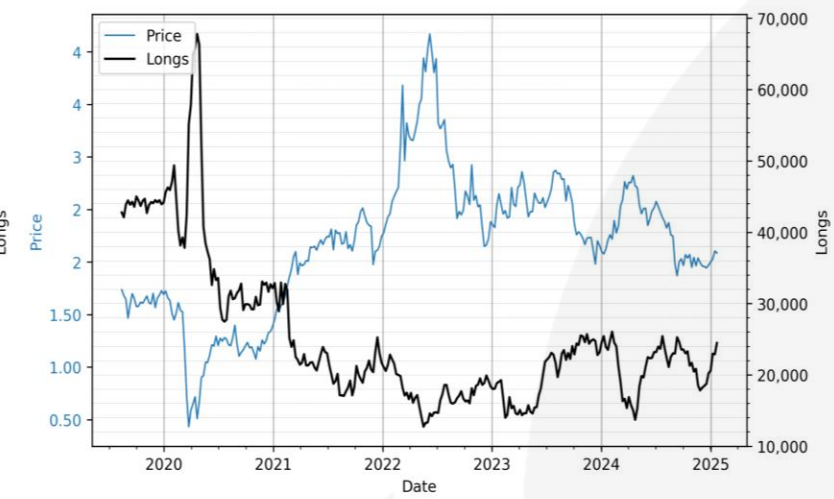
WoW: + 20,220 lots



WoW: + 1,944 lots

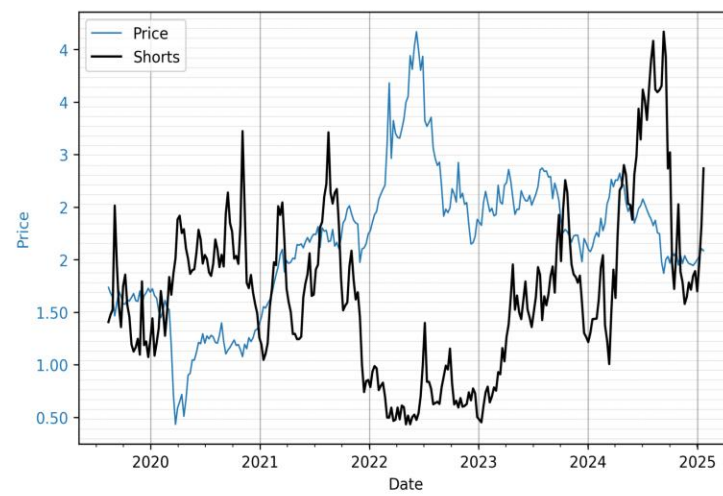


WoW: + 1,582 lots

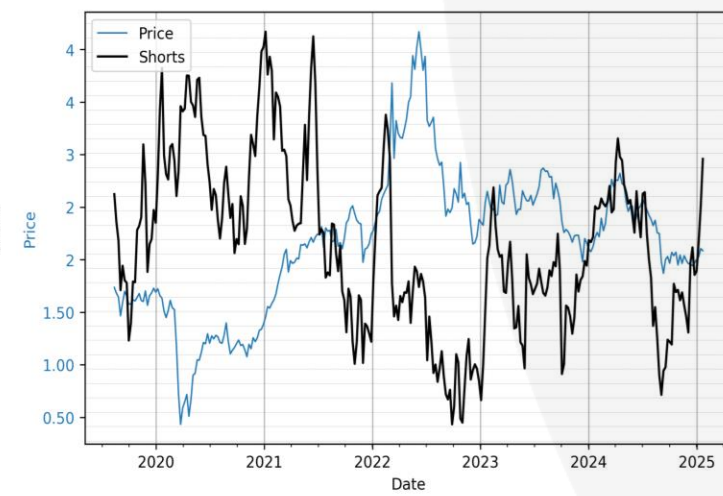


LONGS

WoW: + 5,947 lots



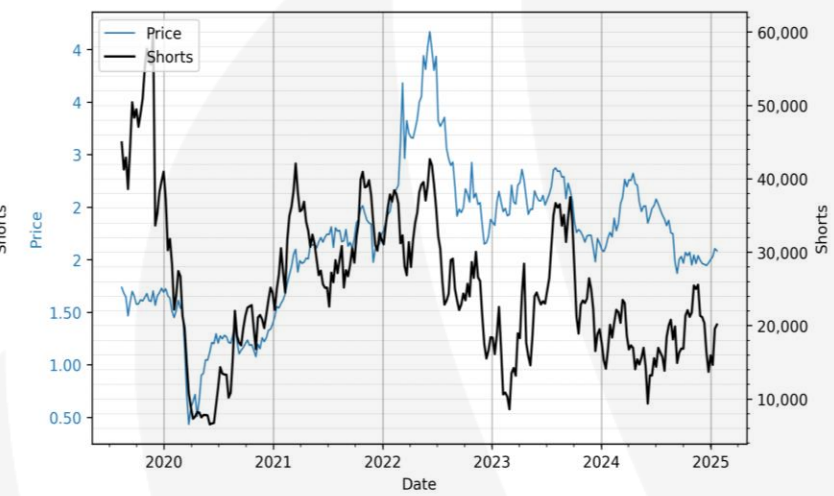
WoW: + 16,244 lots



WoW: -1,820 lots

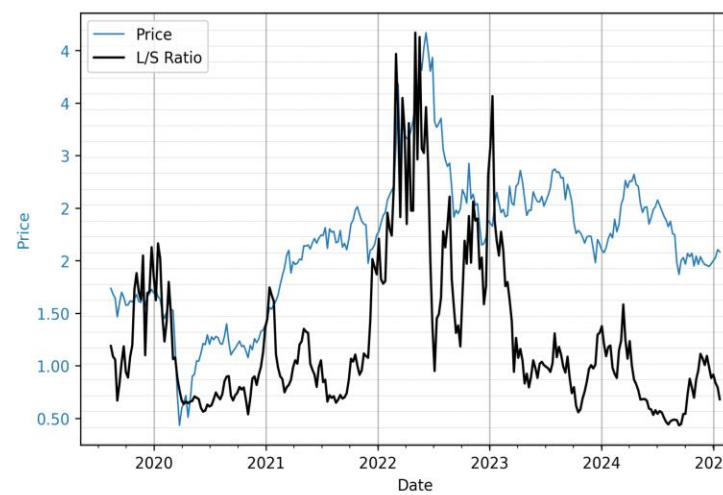


WoW: + 570 lots

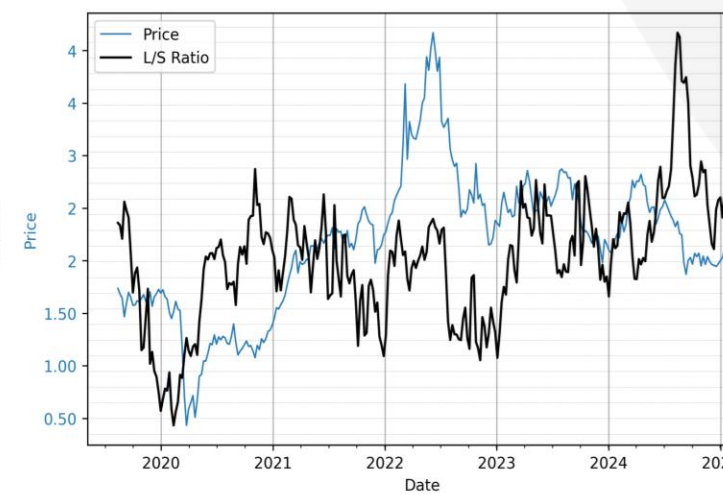


SHORTS

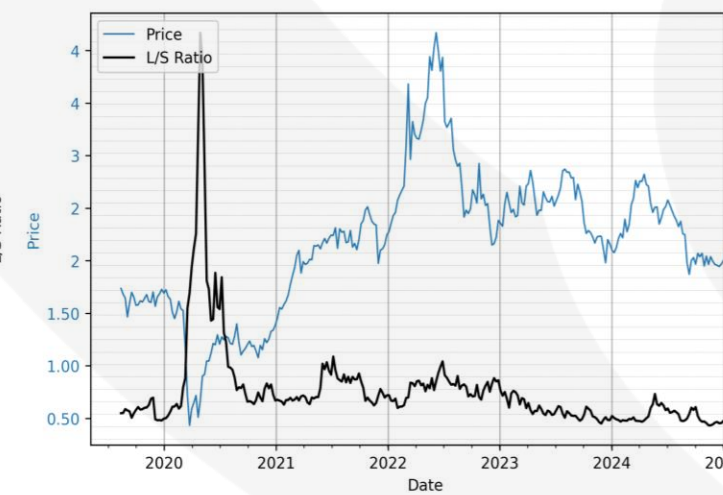
WoW: -0.75 lots



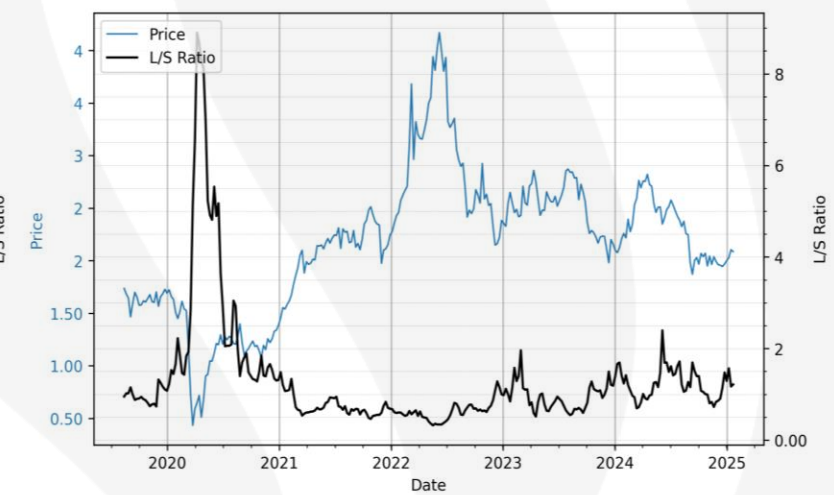
WoW: + 0.04 lots



WoW: + 0.12 lots



WoW: + 0.05 lots



L/S RATIO





Any recommendation, prediction, or suggestion as to an investment strategy has been prepared by Onyx Capital Advisory Limited (“Onyx”) in accordance with legal requirements designed to promote the independence of investment research (“Research”). This research is directed at, and therefore should only be relied upon by, clients who have professional experience in matters relating to investments. Onyx’s Research is not directed at retail clients or those in a jurisdiction in which this distribution may be restricted by local regulation or law. Onyx’s publications are prepared without taking into account your specific investment objectives and financial situation, therefore before acting on any information, you should consider its appropriateness. Onyx’s Research should not be regarded as a substitute for obtaining independent professional advice, including investment, tax and legal advice.

Onyx’s policy is to only publish Research that is impartial, independent, clear, fair, and not misleading. Any views expressed are those of Onyx’s at the time the Research was prepared. No assurances or guarantees are given as to the reliability, accuracy, or completeness of any such information or any matter contained in Onyx’s Research and such Research may contain statements which are matters of judgement and which are subject to change at any time without notice. Onyx accepts no duty or liability, whatsoever, to any party in respect of its Research. Under no circumstances will Onyx be responsible for any losses incurred (whatever their nature) by its clients resulting directly or indirectly from the use or interpretation of any information contained in its Research. Such Research is solely produced and published by employees of Onyx and based on publicly available information. Past performance is not indicative of future performance.

Analysts are required to ensure that they have a reasonable basis for their analysis, predictions, and recommendations. Onyx maintains strict regulatory controls to mitigate any conflicts of interest including information barriers and restrictions on the undertaking of personal transactions in financial instruments.

Onyx is registered in England & Wales (company number 11472304) with its registered address at 95 Cromwell Road, Second Floor, London, United Kingdom, SW7 4DL. Onyx is authorised and regulated by the Financial Conduct Authority (FCA no. 822509).